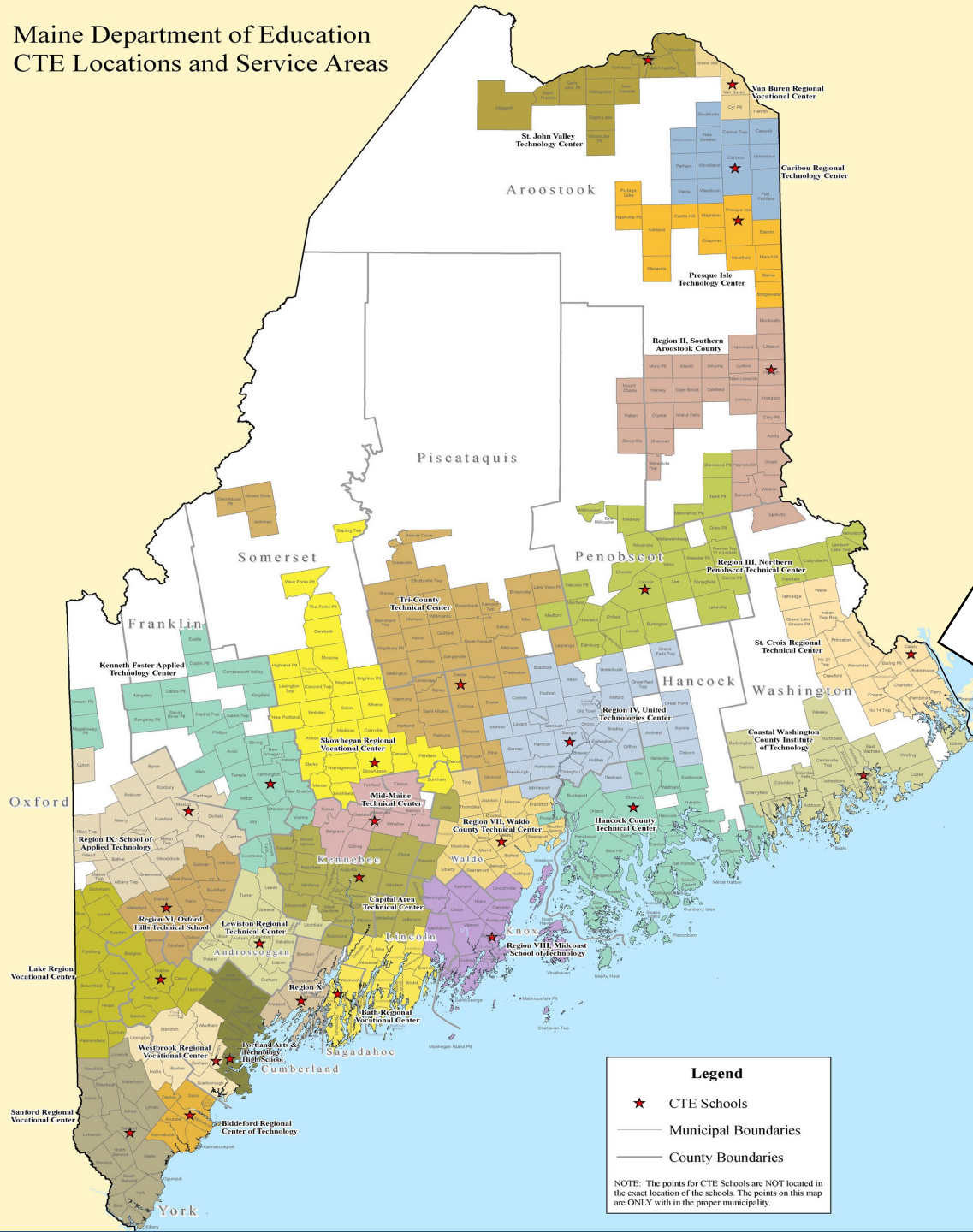




# State of Maine

## CAREER AND TECHNICAL EDUCATION (CTE)

Maine Department of Education  
CTE Locations and Service Areas



# CTE School Locations

works for Maine



# CAREER AND TECHNICAL EDUCATION (CTE)

- 27 CTE Schools
- Enrollment for the last 4-5 Years: 8500-10,011
- 85 Unique CTE Programs
- Total of 424 CTE Programs

# Exploratory/Satellite Programming in CTE

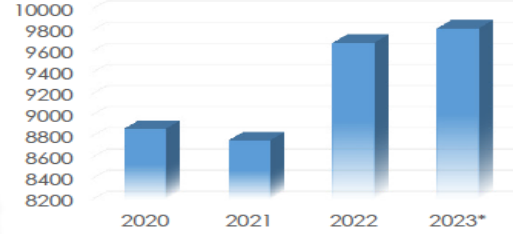
- Increase in CTE Exploratory Programming
  - School Year 18-19: 9 CTE Exploratory Programs
  - School Year 23-24: 25 CTE Exploratory Programs
- Satellite Programs
  - School Year 18-19: 12 Satellite Programs
  - School Year 23-24: 29 Satellite Programs

# Expanding CTE™ in Maine

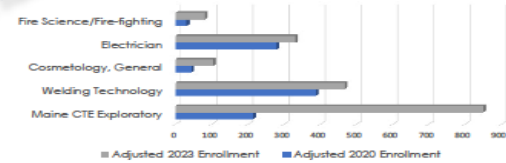
Career & Technical Education (CTE)



## Student Enrollment SY 2019/20 - SY 2022/23\*



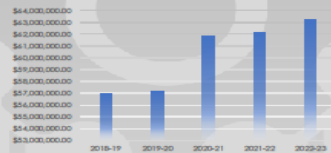
## Top 5 Programs by Growth Since SY 2020/21



Biggest growth has been in **Maine CTE Exploratory** programs that primarily serve freshmen and sophomores. These programs are designed to introduce students to multiple CTE programs on a small scale with the goal that they will gain interest and become more focused as a junior and senior.

## Increased Funding for CTE

### General Purpose Aid SY 2018/19 - SY 2022/23\*



Increase of more than \$6.2 Million during the Mills administration.

**\$1.6 Million**

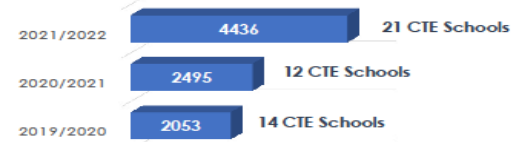
For school year 2022-2023 Governor Mills provided an additional \$1.6 Million to CTE schools to assist in the increase costs of supplies to support CTE programming.

**\$20 Million  
MJRP Funding**

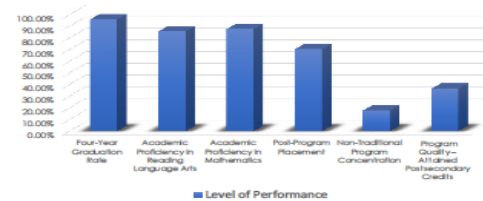
\$15 Million to CTE Schools for program, equipment and facility upgrades, allowing CTEs to expand hands-on, real-world programs for Maine students in plumbing, welding, electrical, building construction, and more!

\$4.5 Million to CTE Schools to purchase and upgrade equipment to enhance student learning experiences and career preparation for high-skilled, in-demand industries! Funds also support increased personnel to assist with growing programs, allowing more students than ever to participate in CTE programs!

## Student Enrollment in Middle School Pilot Programs SY 2019/20 - SY 2021/22



## Student Performance SY 2022/2023\*



\* School Year (SY) 2022/23 data is current as of February 2023

# Innovative CTE Programming

- Medical Services
  - Certified Nursing Assistant
  - Medical Assisting
  - Emergency Services
- Cyber Security
- Aquaculture
- Outdoor Leadership
- Alternative Energy
- Physical Therapy
- Alternative Fuel Vehicles
- Teacher Education

# Middle School (MS) CTE

- Middle School CTE: Pilot Programs
- Three Years of Funding at \$500,000 Per Year
- Three Rounds of Pilots
  - Pilot A: 14 CTE Schools Participated
  - Pilot B: 15 CTE Schools Participated
  - Pilot C: 21 CTE Schools Participated
- Finalizing A Summary Report of MS-CTE

# Ongoing Challenges for CTE

- Teacher Certification
  - Transition from Industry
  - Pay Is A Challenge
  - Additional Course Work
- Student Access
- Perception of CTE
- Maintenance of Equipment and Facilities to Meet Workforce Demand



Maine.gov A secure, online service provided by the State of Maine

Regulatory Licensing & Permitting

PLUMBERS EXAMINING BOARD



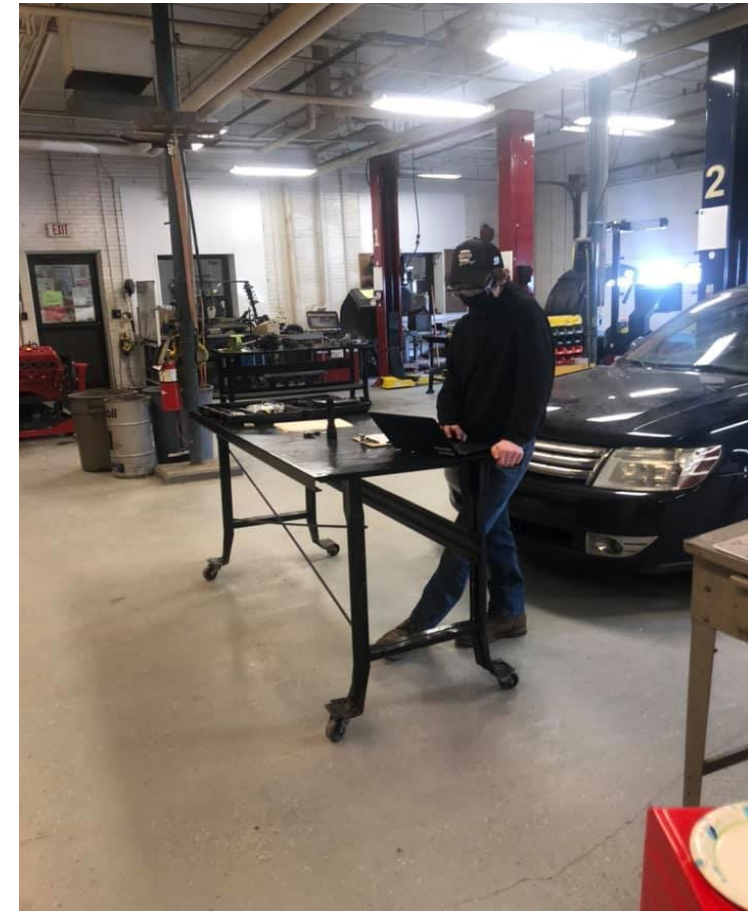
# Funding CTE

- State and Federal Funding (Carl D. Perkins)
- State
  - Around \$60 Million
  - EPS Formula
  - Finance Presentation at Later Date
- Perkins Funding
  - State Board of Education
  - \$6.2 Million
  - Split 50%-50% with Community College System



Assessment	2017	2018	2019	2020	2021	2022	2023	Assessment Type
CTECS Pretest Workplace Readiness Skills	260	259	174	421	26	24	124	Pre-Test
CTECS Retake Workplace Readiness Skills	4	1	6	0	0	24	124	Assessment
Maine Law Enforcement	141	149	197	51	75	93	78	Assessment
Maine Law Enforcement Pre-Test	81	200	213	230	90	111	96	Pre-Test
Maine Natural Resource Systems	4	6	13	0	2	8	5	Assessment
Maine Natural Resource Systems Pre-Test	2	0	1	0	0	0	0	Pre-Test
Maine Plant Systems	32	53	1	0	3	35	29	Assessment
Maine Plant Systems Pre-Test	41	41	46	48	21	30	24	Pre-Test
Maine Video Production Technology	163	150	143	47	128	104	133	Assessment
Maine Video Production Technology Pre-Test	0	80	143	153	99	120	126	Pre-Test
<b>Total:</b>	<b>728</b>	<b>939</b>	<b>937</b>	<b>950</b>	<b>444</b>	<b>549</b>	<b>739</b>	

# CTE in ACTION



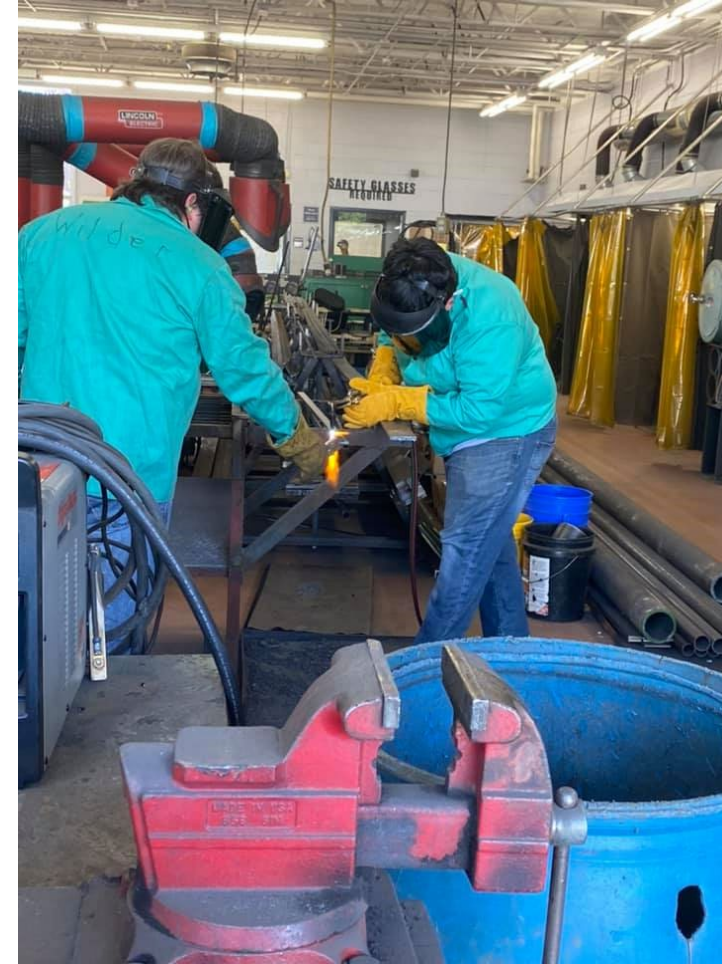
# CTE in ACTION



# CTE in ACTION



# CTE in ACTION



# CTE in ACTION



# CTE in ACTION





# CTE

## EXPLORE

The Possibilities

## EMBRACE

The Possibilities

## EXPAND

The Possibilities

# CTE

## Questions