

CTE Initiatives in New Mexico “The Land of Enchantment”

Presented by:

Breezy Gutierrez, Director

College and Career Readiness Bureau

New Mexico Public Education Department

September 2023



What Does CCRB in New Mexico Do?

- [Graduation Requirements](#)
- [Dual Credit](#)
- [Career Technical Education – 16 Career Clusters](#)
- [Work-based Learning Internships and Apprenticeships](#)
- [Postsecondary Certifications/Industry Credentials](#)
- [Assessments*](#)
- [CTLP – Career Technical Leadership Project](#)
- [High Quality Instructional Materials*](#)
- [Careers2Communities - C2C](#)
- [Pathway2Careers – P2C](#)
- [Next Step Plan](#)
- [CTE Regional Coaches](#)
- [JTIP*](#)
- [Advanced Placement/International Baccalaureate](#)
- [Career Technical Student Organizations – CTSO](#)
- Canvas Professional Development
- [STEM Challenge*](#)
- [Online CTE](#)
- [Perkins Funding](#)
- [NextGen Funding](#)
- [Programs of Study](#)
- [Accountability*](#)
- [Early College High School](#)
- [Summer Internship](#)
- [Near Peer Tutoring](#)
- [School Counselors](#)
- [Equity – Office of Civil Rights](#)
- Monitoring and Site Visits
- Innovation Zones



Initiatives in NM

- Bureau of Indian Education (HB 198)
- C2C/P2C
- Counselors
- CTLP/CTSO
- Early College High School
- Innovation Zones
- Near Peer Tutoring
- Postsecondary CTE
- Summer Enrichment Internship Program
- Work-based Learning (WBL)



BIE

AN ACT

RELATING TO PUBLIC EDUCATION; AMENDING THE CAREER TECHNICAL EDUCATION PILOT PROJECT AND THE CAREER TECHNICAL EDUCATION FUND TO INCLUDE SECONDARY SCHOOLS FUNDED BY THE FEDERAL BUREAU OF INDIAN EDUCATION.

- Technical Assistance to BIE Schools to create CTE Programs of Study
- Monthly Community of Practice
- Individualized support and coaching
- Building trust and relationships

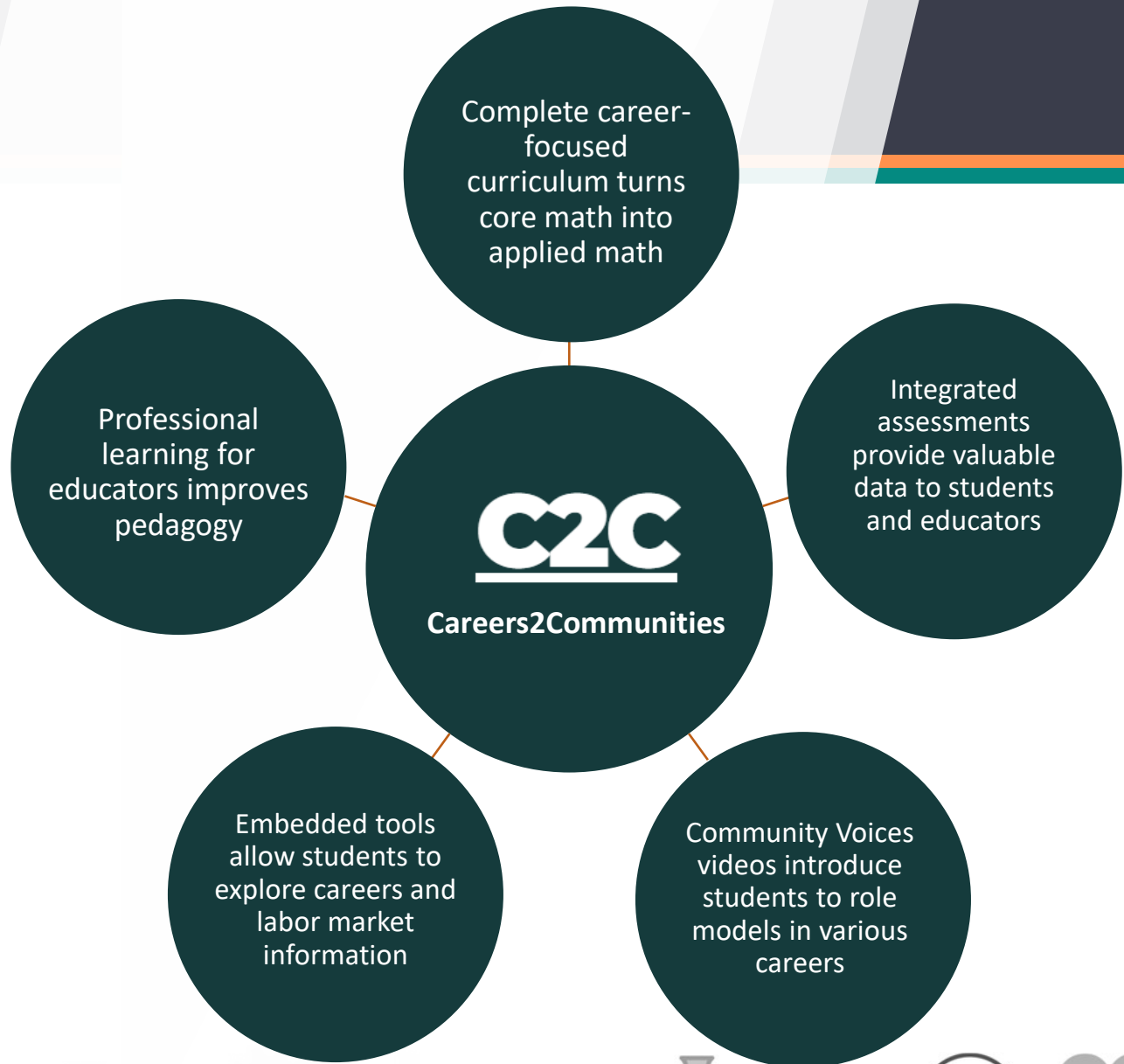


C2C – Careers 2 Communities

C2C is a series of resources to help more students learn about and prepare for high-value careers, making school more relevant. Projects include:

1. Pathway2Careers (career-focused math curricula)
2. Quantile assessments
3. Career advisement tools
4. Career Exploration lesson plans
5. Community Voices videos
6. Online CTE pathway





Counselors Support Network

- [Counselors and Advisors – New Mexico Public Education Department \(state.nm.us\)](http://state.nm.us)
- Counselors Network
 - Counselor Connection monthly newsletter
 - FAFSA Canvas course with NMEAF
 - Monthly counselor meetings
 - Next Step Plan update and Implementation
 - NM School Counselors Community of best practice resource library
 - [School Counselors NM – Community of Best Practice \(schoolcounselors-nm.com\)](http://schoolcounselors-nm.com)



CTLP/CTSO's



- New Mexico has the Career Technical Leadership Project (CTLP), which oversees four separate CTSOs within New Mexico—Business Professionals of America (BPA), FCCLA, DECA, and HOSA. The organization focuses on supporting enrollment and involvement for member organizations, providing professional development for students and advisors, and further connecting business and industry needs to educational offerings.



Early College High Schools (ECHS)

- [Early College High School – New Mexico Public Education Department \(state.nm.us\)](http://state.nm.us)

There are currently 21 ECHS campuses state-wide:

- ECHS Community of Best Practice Resource Center
- Provide structure and guidance for schools wanting to apply to be an ECHS Program
- Structured Meetings, Convenings, PLCs
- Focused Professional Development & PLCs
- Review, Develop, and Customize Program-Specific Materials
- Communication, Coaching, and Support



Innovation Zones

- Innovation Zones

Administer competitive funding to schools who wish to transform the high school experience by creating a local graduate profile that integrates work-based learning, CTE, and capstones, among other opportunities.

ZUNI PUBLIC SCHOOLS
Portrait of a Graduate
"Taking Aim at the Future"

<ul style="list-style-type: none"> Demonstrates proficiency in content knowledge, academic skills, and technology. Possesses career readiness and vocational skills to access jobs in a competitive world. Equipped with financial literacy and personal money management skills. Communicates and delivers information effectively through spoken, written, and digital media. 	<p>KNOWLEDGEABLE Ayyuyasna</p> <p>HEALTHY Andemo'la ho'i</p> <p>CREATIVE Tse'mak tscha /anikwa</p> <p>ADAPTABLE Kwan ank'okshi</p> <p>CONTRIBUTOR Yakshunan i: satde: n'ona</p> <p>CONNECTED De'akwiye</p>	<ul style="list-style-type: none"> Identifies and manages their emotions, thoughts, and behaviors effectively. Cares for own physical, social, and emotional health and contributes to family, community, and tribal health. Establishes and maintains healthy, supportive relationships. Develops cultural and self awareness, positive self image and growth mindset leading to a strong identity and sense of purpose. Applies knowledge, skills, and attitudes to develop healthy identities, manage emotions and achieve personal and collective goals. Displays grit and resilience to persevere through life's experiences. Anticipates and evaluates consequences of their actions to make responsible decisions. Lives intentionally in the A:shwi way. Exemplifies proficiency in Zuni language, culture, and history. Observes Zuni Core Values in daily life. Balances and maintains a strong Shiwí identity while navigating and adapting in the world.
---	--	---



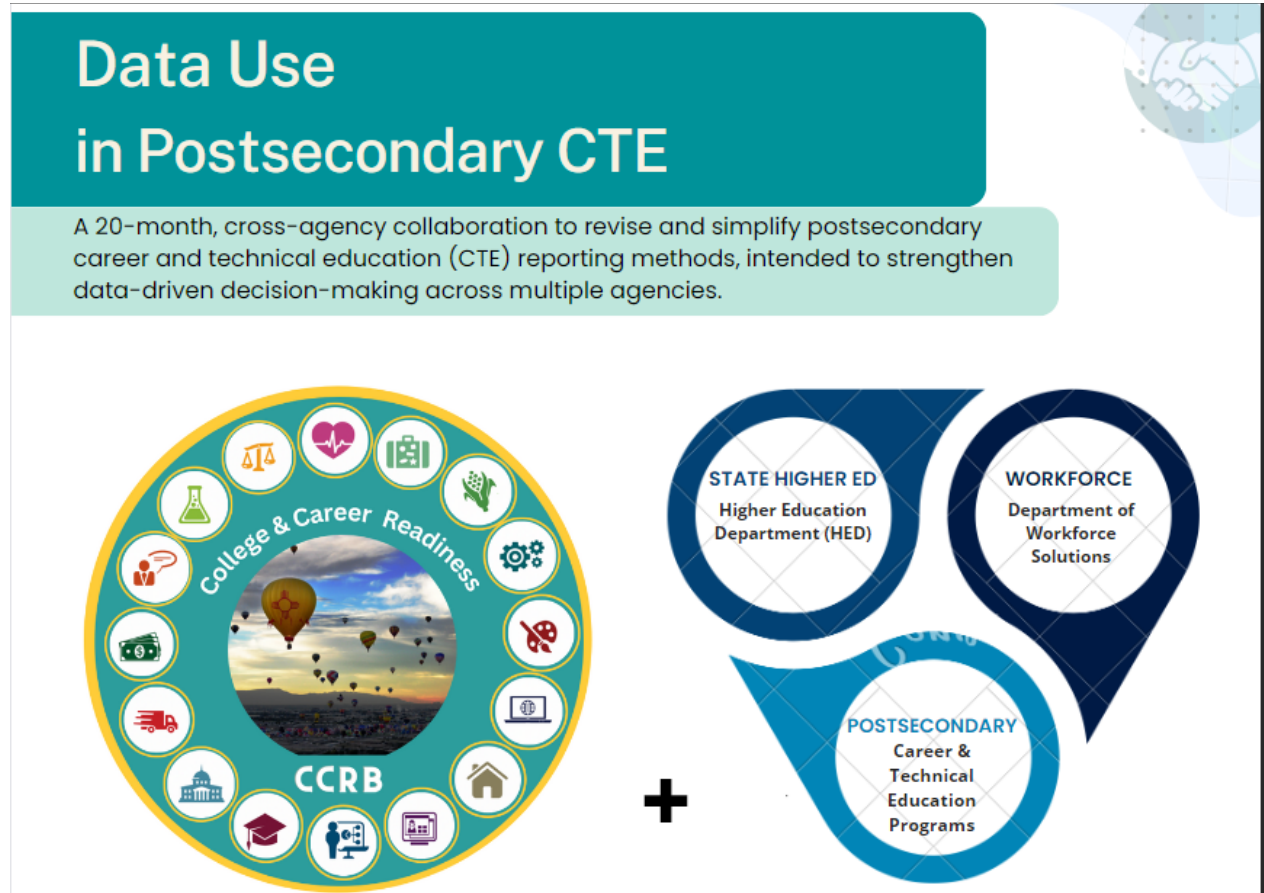
Near Peer Tutoring

- The primary goal is to provide high school students with access to paid work-based learning opportunities. The funding is intended to pay high school students as near-peers who provide tutoring to younger student learners, in district supervised programs that support one or more of the following aims:
 - Provide paid opportunities for work-based learning experiences in the field of education
 - Increase interest and build the confidence of interns in education and education-related careers
 - Develop professionalism of mentor-tutors through the work-based learning experience and via direct training and adult support
 - Develop student readiness for workforce and college



Postsecondary CTE

- **Strengthening the Culture of Data Use in Postsecondary CTE:** A 20-month, cross-agency collaboration to revise and simplify postsecondary career and technical education (CTE) reporting methods, intended to strengthen data-driven decision-making across multiple agencies. The 2nd edition of *New Mexico Postsecondary Data Reporting Guidelines* is expected to be released Summer 2025.



Summer Enrichment Internship Program

- [Summer Enrichment Internship Program – New Mexico Public Education Department](#) (state.nm.us)
- SEIP – CCRB provides funding for paid Summer Enrichment Internship Programs through county and tribal governments and several non-profit organizations.



Work-Based Learning (WBL)

Work-Based Learning: We partner with organizations to bring meaningful workforce opportunities to students.

- Be Pro Be Proud – Is a national program administered by the Department of Workforce Solutions, in collaboration with CCRB. The program is in development, but includes a traveling semi truck, featuring virtual job exploration stations and 26 apprenticeship career consultants available to work directly with teachers and students.
- Near Peer Tutoring
- Summer Enrichment Internship Program



Questions?



Breezy Gutierrez | Director

New Email Address: Breezy.Gutierrez@ped.nm.gov

New Mexico Public Education Department, College and Career Readiness Bureau

300 Don Gaspar Ave. | Santa Fe, NM 87501

C: (505) 231-5425 |

