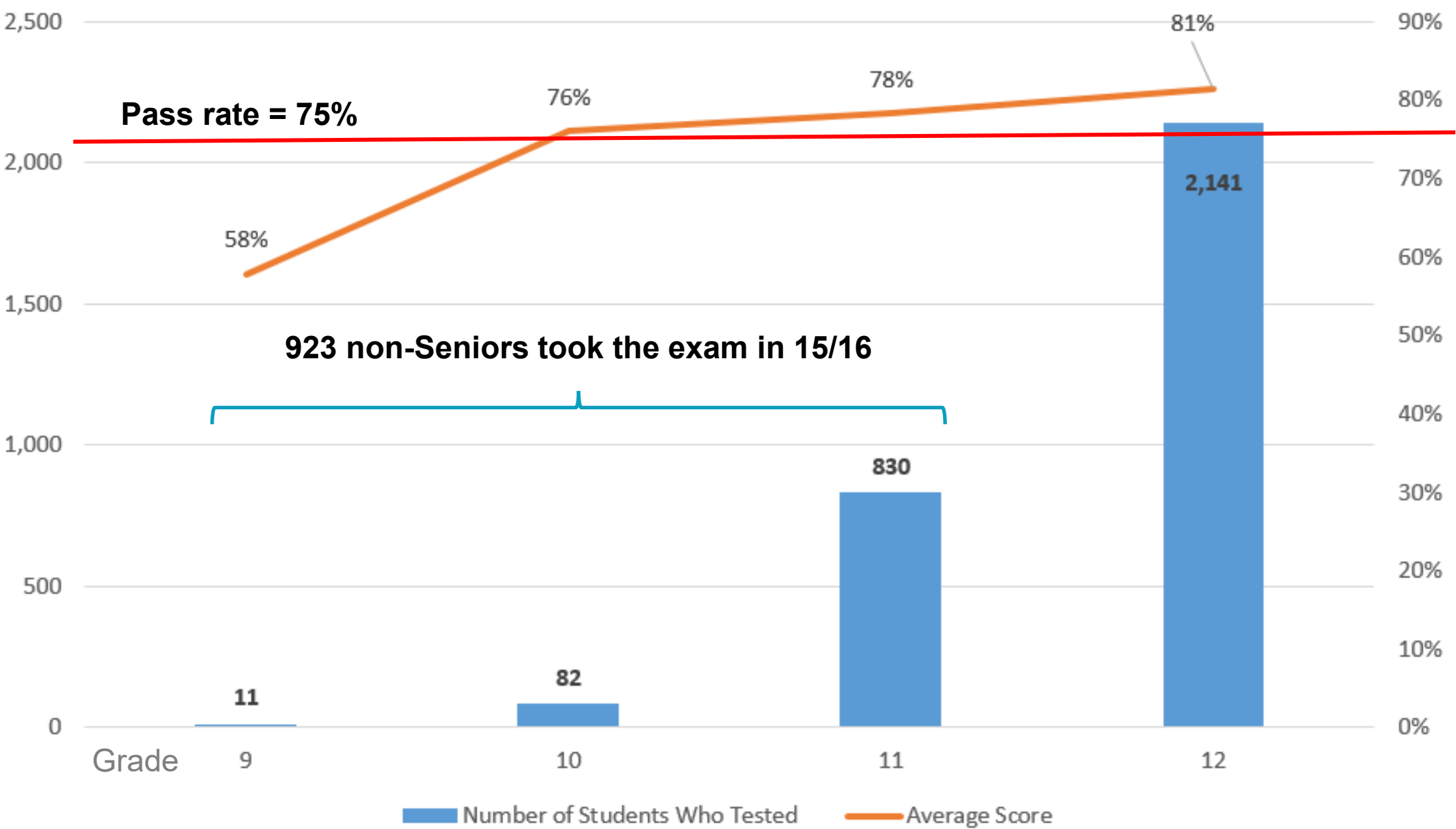


Idaho Data, SkillStack® and Badging

CTECS COP

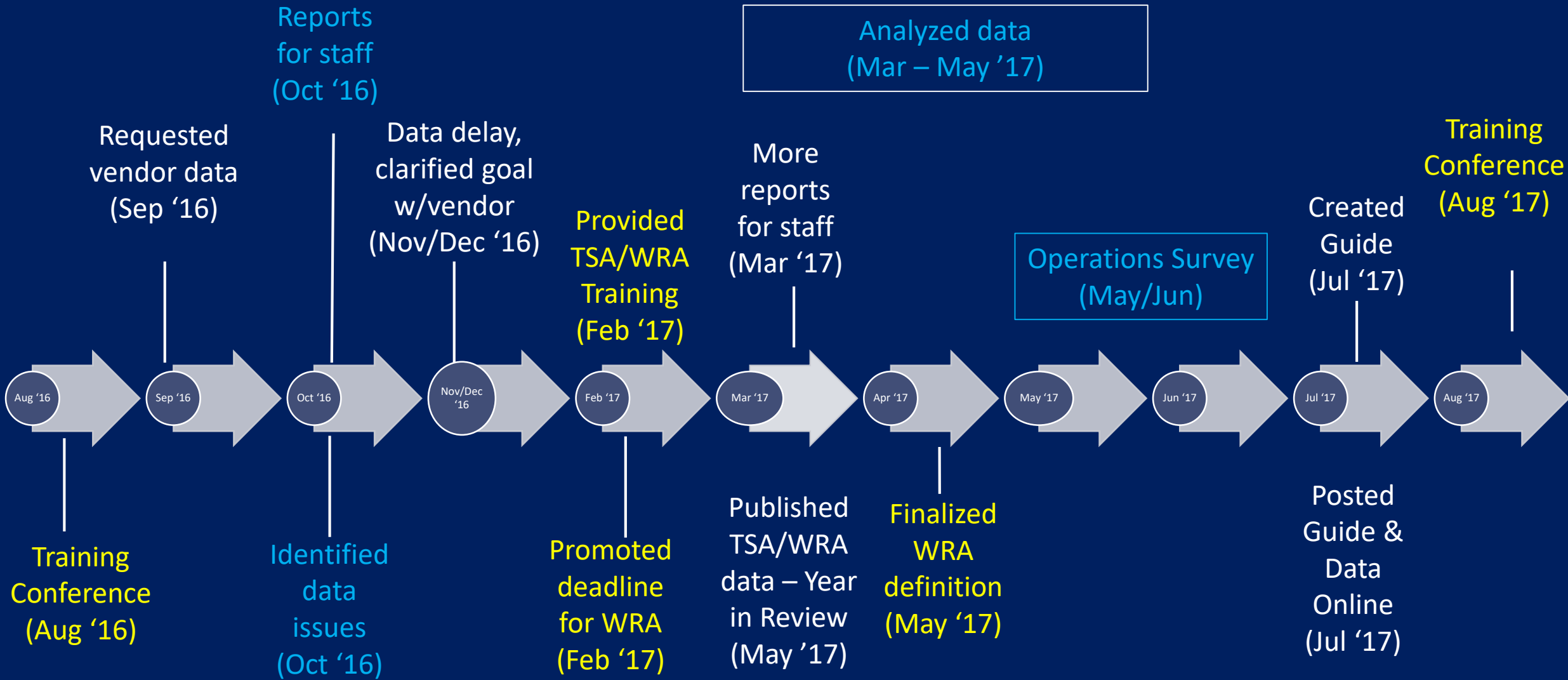
September 2022

2015-16 WRA Exam Results by Grade



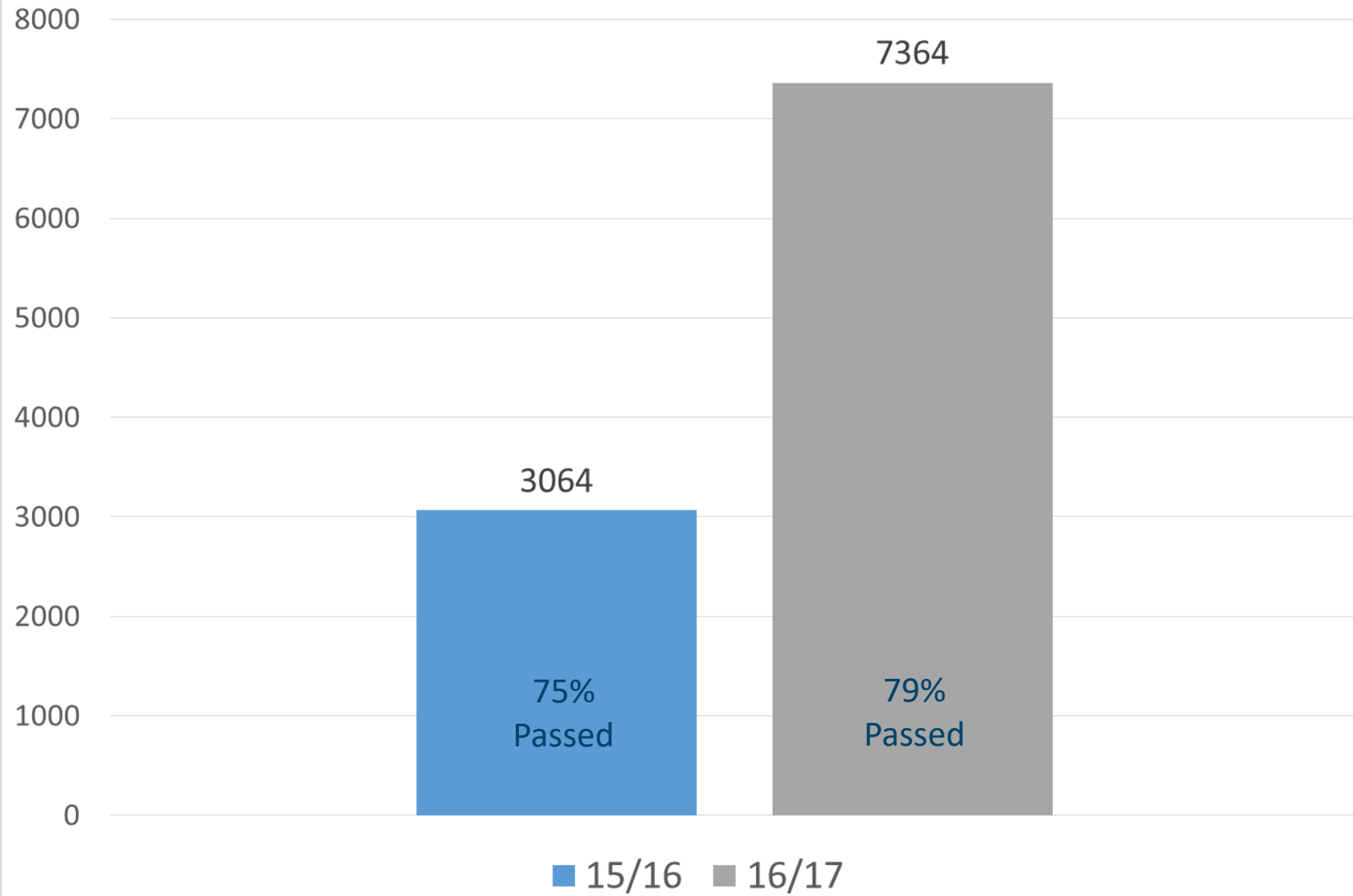
Project Scope (2016-2017)

- IDCTE needed to provide training and clarification on ALL assessments before promoting assessment results and improving pass rates.



General Timeline

Participation



Reports



Technical Skills Assessment Welding

Standard of Mastery (Cut Score): 70%

District	2016 - 2017 Rate(%)	2017 - 2018 Rate(%)	2018 - 2019 Rate(%)	2020 - 2021 Rate(%)	2021 - 2022 Rate(%)
Blackfoot District	83	92	42	-	-
Boise Independent District	75	100	67	53	64
Bonneville Joint District	73	73	82	50	57
Butte County Joint District	-	100	63	67	20
Caldwell District	54	50	20	100	71
Canyon-Owyhee School Service Agency (COSSA)	80	100	73	33	67
Cassia County Joint District	-	-	-	80	63
Elevate Academy Inc.	-	-	-	-	8
Idaho Bureau Of Educational Services For The Deaf And The Blind	-	-	100	-	-
KTEC	27	69	74	94	94
Lake Pend Oreille School District	41	83	100	36	80
Nampa School District	42	69	37	75	75
Payette Joint District	-	-	25	29	89
Pocatello District	100	40	24	-	100
Preston Joint District	-	-	6	-	-
Salmon River Joint School Dist	0	100	20	-	-
Twin Falls District	-	8	25	40	80
West Bonner County District	100	-	100	-	-
Statewide	56	63	48	56	67

Perkins V analysis (5S4)
Future: PowerBI reports



Results by Standard

2021-2022 Technical Skills Assessment Welding

Legend (%)		
0-50%	51-75%	76-100%

Assessment: Welding Number tested: 459 *May contain results from Agriculture Welding	% Correct 17-18*	% Correct 18-19	% Correct 20-21*	% Correct 21-22
CONTENT STANDARD 1.0: IDENTIFY LAB ORGANIZATION AND SAFETY PROCEDURES	78.75%	77.27%	77.71%	78.60%
Performance Standard 1.1: Demonstrate general lab safety rules and procedures	78.71%	77.79%	78.45%	78.82%
1.1.1 Describe general shop safety rules and procedures (i.e., safety test)	97.89%	97.11%	94.67%	95.10%
1.1.2 Describe OSHA in workplace safety	84.94%	86.13%	84.26%	85.10%
1.1.3 Comply with the required use of safety glasses, ear protection, gloves, and shoes during lab/shop activities, i.e., personal protection equipment (PPE)	94.13%	92.77%	92.86%	93.67%
1.1.4 Operate lab equipment according to safety guidelines	73.95%	73.41%	69.73%	67.55%
1.1.5 Identify and use proper lifting procedures and proper use of support equipment (i.e., rigging, chains, straps, cables)	88.25%	87.28%	88.86%	86.43%
1.1.6 Utilize proper ventilation procedures for working within the lab/shop area	94.28%	91.62%	89.47%	90.71%
1.1.7 Identify marked safety areas	84.64%	83.82%	82.08%	80.82%
1.1.8 Identify the location and the types of fire extinguishers and other fire safety equipment; demonstrate knowledge of the procedures for using fire extinguishers and other fire safety equipment	73.49%	68.21%	74.21%	74.08%
1.1.9 Identify the location and use of eye wash stations	91.11%	93.06%	91.16%	93.88%
1.1.10 Identify the location of the posted evacuation routes	84.94%	75.14%	78.45%	80.00%
1.1.11 Identify and wear appropriate clothing for lab/shop activities	48.49%	49.71%	57.87%	60.00%
1.1.12 Secure hair and jewelry for lab/shop activities	90.06%	90.75%	90.80%	88.16%
1.1.13 Demonstrate knowledge of the safety aspects of high voltage circuits	85.54%	84.68%	85.59%	87.45%
1.1.17 Follow written instructions to complete work assignments	73.19%	72.25%	72.88%	73.47%
1.1.18 Identify requirements for Hot Work Permits	36.45%	45.09%	43.70%	45.51%
1.1.19 Identify what constitutes a confined space	58.89%	52.31%	58.35%	60.00%

Ongoing efforts

Type	Date	Costs - Paid By	Test Tickets Created by
Test Site Administrators	Register annually and early for ongoing communication	n/a	n/a
Pre-tests TSA: for capstone students grades 11/12 ----- WRA: for qualifying seniors or capstone juniors	Aug. 15 - Oct. 14 Nov. 28 - Jan. 31 Mar. 1 - Mar. 31 Pre-tests reopen in Jan. with a 10-day waiting period between tests.	\$7 - IDCTE ----- \$7 - District	School
WRA WRA: for seniors in their 2 nd CTE course (grades 9-12) or junior capstone students	Nov. 1 - May 12*	\$10 - IDCTE	IDCTE using ISEE data
TSA Semesters	Nov. 1 - May 12*	\$8 - IDCTE	IDCTE using ISEE data
WRA/TSA Trimesters	Oct. 17 - May 12*	\$10 WRA/\$8 TSA - IDCTE	Schools upload students all year*
TSA / WRA Retakes	>14 days after TSA (May 26* is last day)	\$8 TSA - District \$10 WRA - District	School

FAQ for Assessments 22/23 School Year

TECHNICAL SKILLS ASSESSMENT (TSA)

WORKPLACE READINESS ASSESSMENT (WRA)



Career Technical Education Consortium of States ([CTECS](#)) will create and host all pathway TSAs and the WRA.

Assessment test tickets

- 20/21
 - TSA 157 unmatched students
 - WRA >\$10,000 (1,000 bad test tx)
 - Districts created own test tickets
- 21/22
 - TSA 217 unmatched students
 - WRA 477

Test tickets

Current state



Ideal/Future State



What is SkillStack®?

EDUCATORS

Assess & Validate



Idaho's secondary (high school) and postsecondary (higher education) educators validate skills in SkillStack®

Required Skills:

- Formulate a strategy for developing a climate of mutual trust
- Identify and meet employee motivational needs
- Participate in and identify the four stages of team development
- Write and communicate performance expectations
- Lead supportive and corrective coaching sessions

Demonstrate & Earn



Leading Others

Issued 1/25/2020

Required Skills:

- Formulate a strategy for developing a climate of mutual trust
- Identify and meet employee motivational needs
- Participate in and identify the four stages of team development
- Write and communicate performance expectations
- Lead supportive and corrective coaching sessions

LEARNERS

Build Your Portfolio

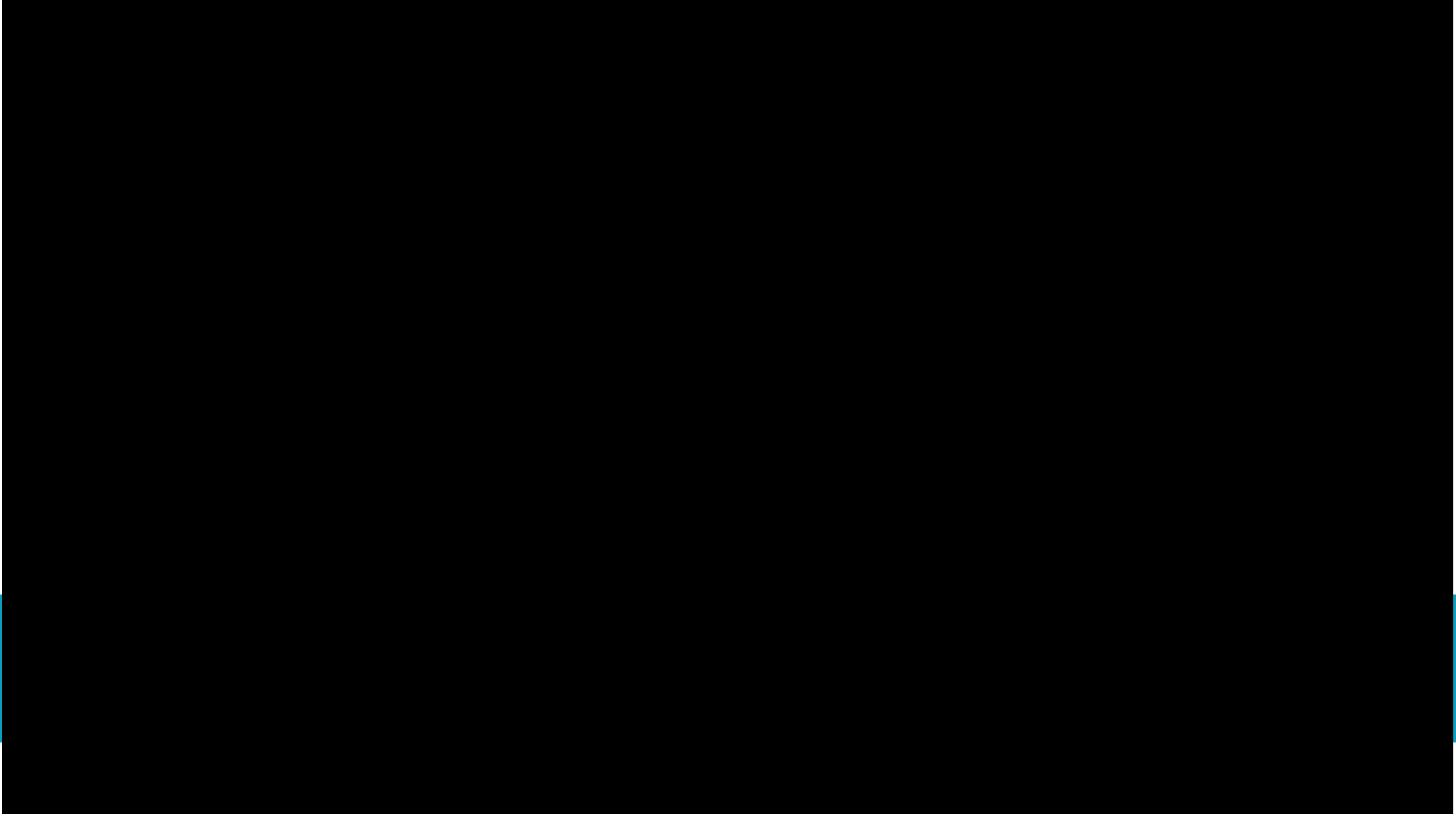


Export, Download, & Share

- Badgr Backpack
- Facebook
- Twitter
- LinkedIn
- Email
- Webpage
- Future Employers
- Colleagues
- Potential Clients

And more!

Introduction Video



Background and policy

Background

- Funded by a grant awarded by the U.S. Department of Labor's Employment and Training Administration.
- Platform specifically developed for Idaho needs.
- Statewide approach for consistency
- Ongoing yearly allocation for system enhancements

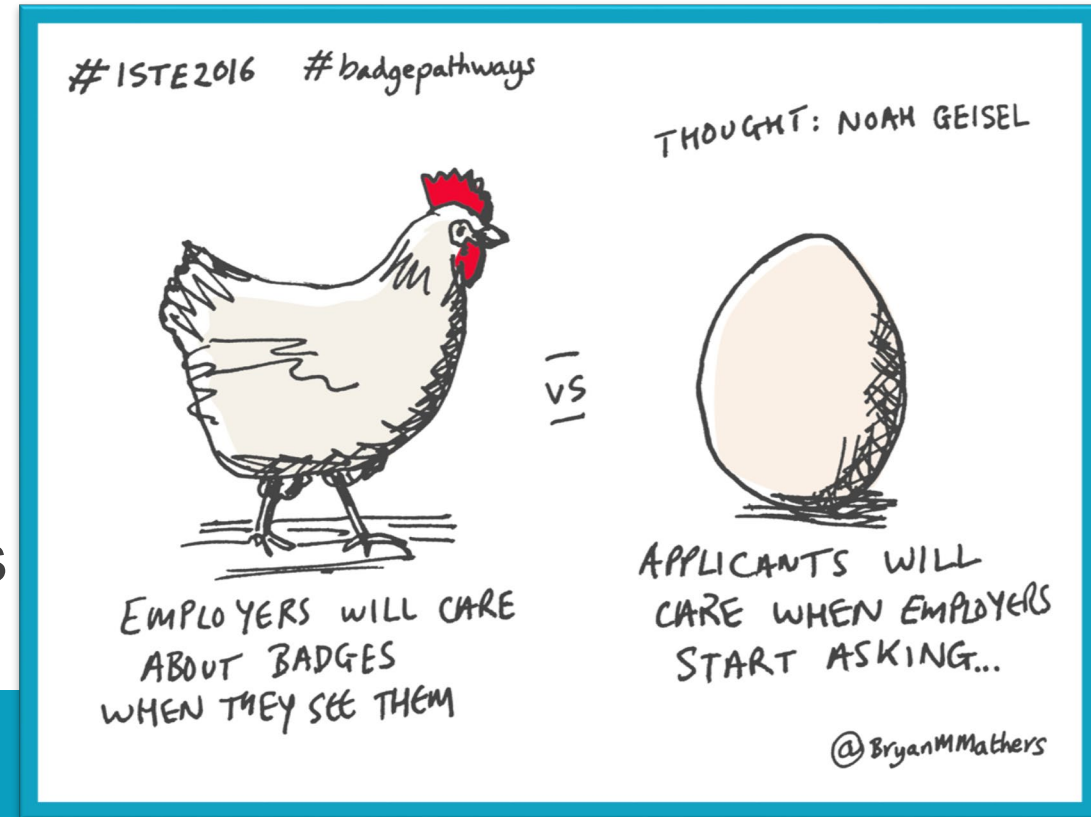
Idaho State Board of Education Policy III. E. 1. a (2019)

viii. Microcertification

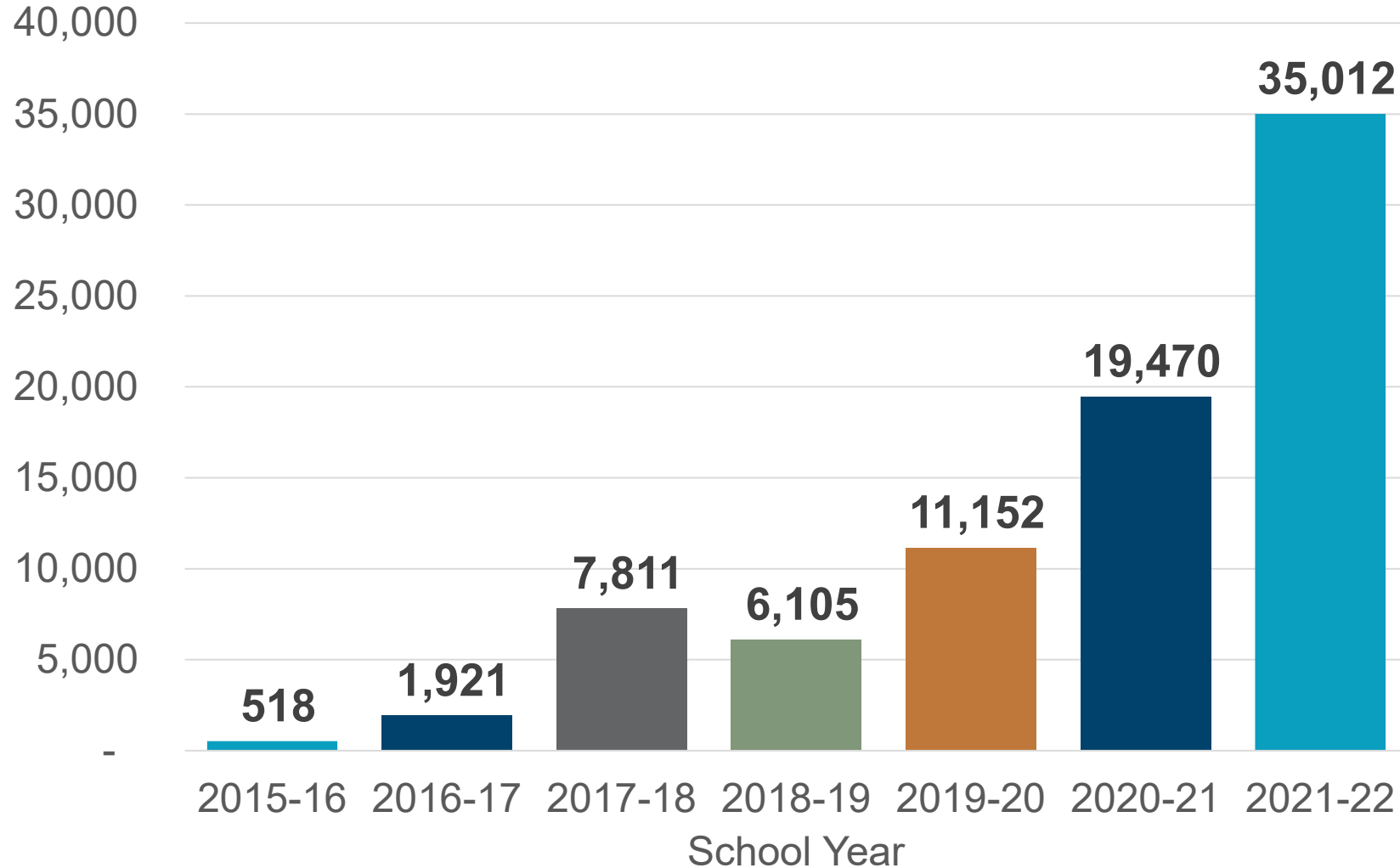
A credential in a narrowly focused area within career-technical education (CTE) or academic program that confirms mastery of a specific industry-related skillset or topic. Completion of multiple microcertification courses may lead to a certificate.

Journey and Challenges

- Adoption (low participation)
- Employer recognition
- Lack of knowledge around digital badges
- Administrative/workload
- COVID
- Different stakeholders and different needs
 - Educators, Legislature, Employers, Students



Badges issued, >81,000



**Over 25,000
unique learners
have been
awarded at least
one badge!**

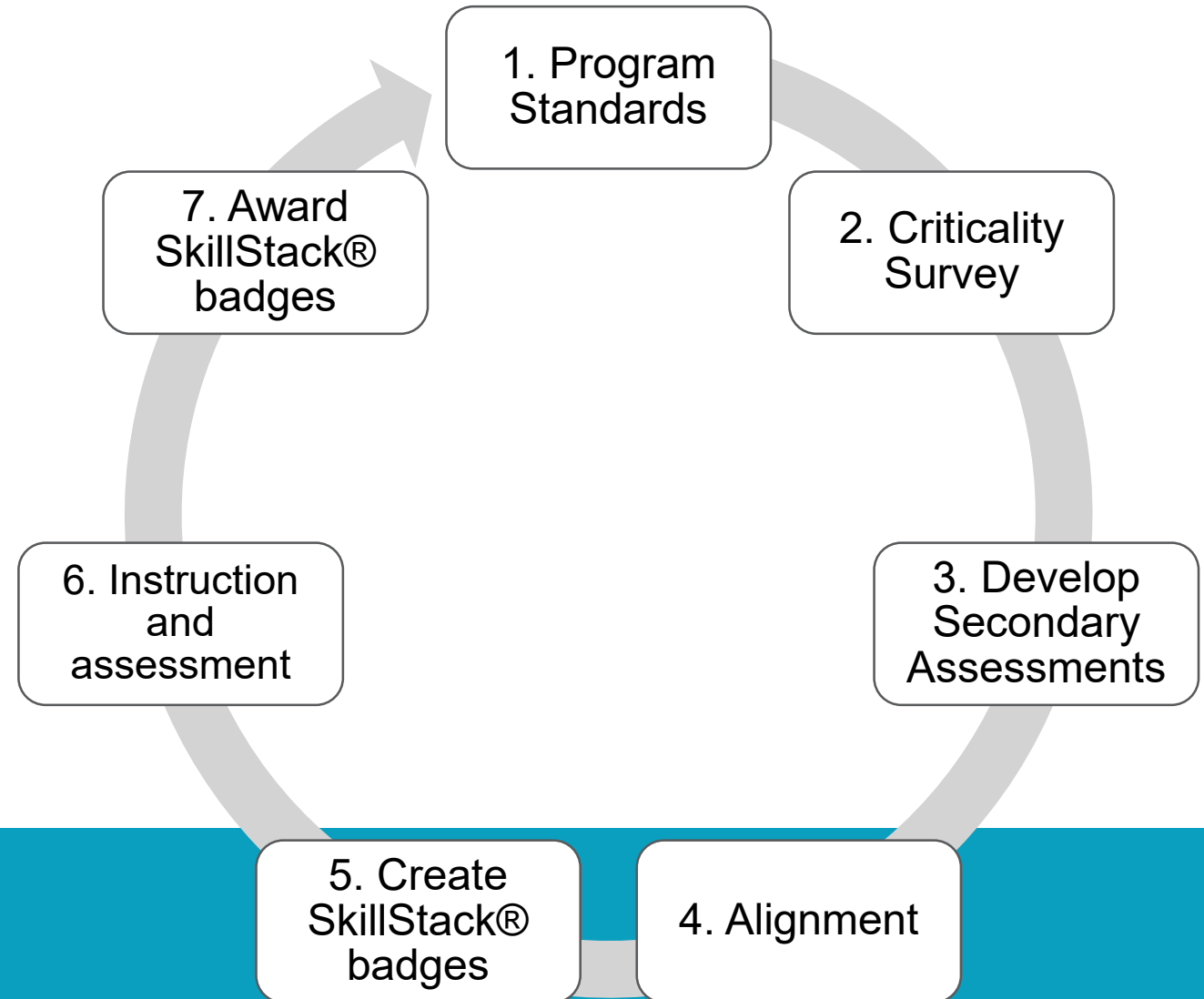
Program Quality

How?

- Program alignment process

Postsecondary

- Microcredential Development template
 - Consultation
 - Collaboration - review
 - Creation



Tracking progress and sharing badges

Learners can track their progress in a unique portfolio and share badges with family, friends, colleagues, employers, and more!

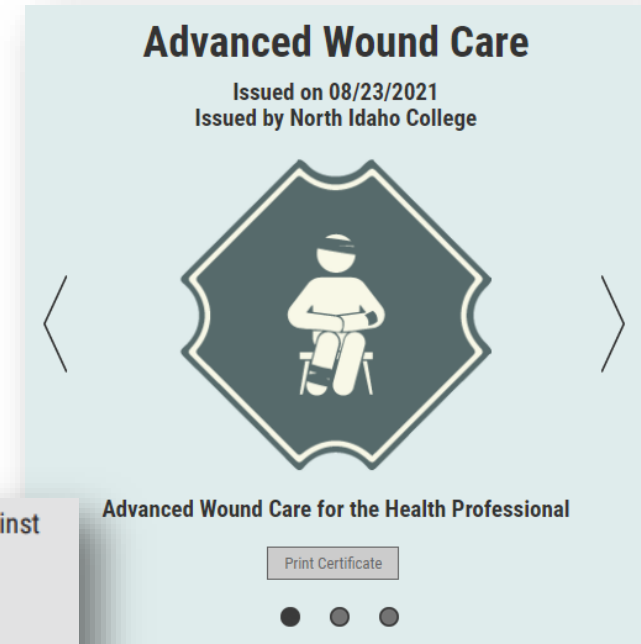
- Track progress towards a stacked badges
- See date completed for skills and badges
- Download or export badges or certificate
- Share badge(s) in many ways



Metadata

Digital badges:

- Data-rich
- Verifiable
- Portable
- Stackable
- Sharable



Alignment	Framework a badge has been assessed against
Badge Criteria	Skills completed to earn the badge
Badge Description	Description of the badge
Badge Name	Name of the badge
Evidence URL	Badge earner's unique evidence (optional)
Expiration Date	Whether the badge has expired
Issue Date	When the badge was issued (or revoked)
Issuer	Details about the organization issuing the badge
Recipient	A verifiable reference to the recipient
Tags	Searchable tags

“Open Badges is the world's leading *format* for digital badges. Open Badges is not a specific product or platform, but a type of digital badge that is verifiable, portable, and packed with information about skills and achievements”

SkillStack® Recruit

Verified industry partners can login, identify a specific set of microcredentials related to their hiring needs, and send a customized email to potential candidates that possess the desired skills – all within the SkillStack® platform.

1. Select a region
2. Identify badges that meet employer needs
3. Send custom recruiting email

Recruit Search

Search for people with selected badges in selected geographic areas.

Find People in the following regions (required)

- All
- Region 1
- Region 2
- Region 3
- Region 4
- Region 5
- Region 6
- Unknown

Find people with the following badges (required)

Search:

Select entire career fields or individual badges.

Name	Earned	Selected
▶ Agriculture, Food & Natural Resources	2464	<input type="checkbox"/>
▶ Architecture & Construction	778	<input type="checkbox"/>
▶ Arts, A/V Technology & Communications	999	<input type="checkbox"/>
▶ Business, Management & Administration	2449	<input type="checkbox"/>
▶ Career Development	8758	<input type="checkbox"/>
▶ Education & Training	273	<input type="checkbox"/>
▶ Finance	490	<input type="checkbox"/>
▶ Health Science	5304	<input type="checkbox"/>
▶ Hospitality & Tourism	1761	<input type="checkbox"/>
▶ Human Services	385	<input type="checkbox"/>

Earned badges within the specified time frame:

Growth and Partners

Secondary (High School) Pathways

- Credit articulation, program quality, assessment validation, workforce readiness

Postsecondary (Higher Education) Institutions

- Stackable badges within certificate or degree pathways, credit for prior learning

Boise State University

- Employee professional development

Workforce Training Centers

- Local industry needs and wage progression

Idaho Department of Correction

- CTE programs and re-entry skills [Skill Stack - Idaho Dept. of Correction](#)

Idaho Department of Juvenile Corrections

- Youth career exploration

US/ID Department of Labor

- Apprenticeship Expansion, Equity, and Innovation grant

Other Educational Entities

- Wisdom Ranch Gap Year Program and Sho-Ban High School Programs

IDCTE is a member of 1EdTech (formerly IMS Global)

- Conversations/relationships helped us move SkillStack(R) forward
- IDCTE is only using Open Badge at this time
 - SkillStack(R) is 1 of 26 certified badging entities in the world

Together, we power learner potential

Our community of leaders across K-12, higher education, and corporate learning provide coordinated leadership that improves the edtech ecosystem for every learner. Discover how our leadership imperatives can establish the foundation to enable the next generation of education and learning.

Accelerate best-in-class, safe digital learning experiences

[Learn More](#)

Enable personalized learner journeys

[Learn More](#)

Boost achievement, opportunity, and employment

[Learn More](#)

Improve student success, retention, and outcomes

[Learn More](#)

Digital Credentials and Pathways



Open Badges



Token Representing an Achievement

Comprehensive Learner Record (CLR)



Longitudinal Record of Achievements and Milestones

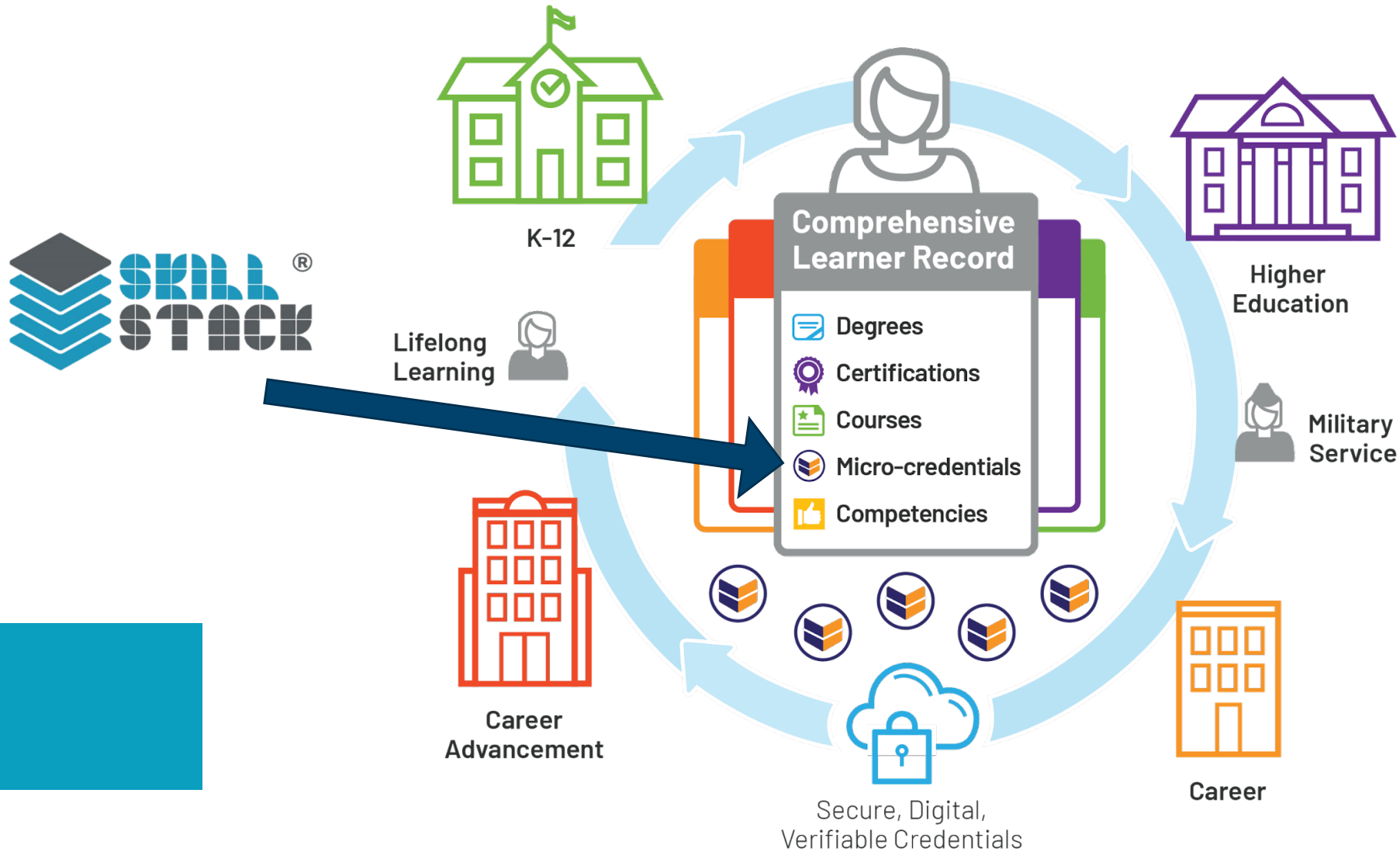
CASE



Publish and Relate Skills

Competencies & Academic Standards Exchange

Digital Credentials Ecosystem





Our community of leaders across K-12, higher education, and corporate learning provide coordinated leadership that improves the edtech ecosystem for every learner.



Standards Work



1EDTECH

State	Specific Department/Agency	1EdTech	Additional
California	California Dept of Education	Publishing some academic standards in CASE	
Kentucky	Kentucky Dept of Education	Contributing Member with 1EdTech	
Maine	Maine Dept of Education	Publishing some academic standards in CASE	
Nevada	Nevada Dept of Education	Publishing some academic standards in CASE	
South Carolina	South Carolina Dept of Education	Contributing Member with 1EdTech	To help level playing field for students, educators, and staff, the dept. of education acquired 1EdTech memberships for 82 Local Education Agencies.
South Carolina	South Carolina Department of Education	Publishing many academic and CTE Standards in CASE	CTE Standards Ex: https://casenetwork.imsiglobal.org/vsalt/index.html#/cftree/doc/2648
Virginia	Virtual Virginia	Contributing Member with 1EdTech	
Virginia	Virtual Virginia	Publishing some academic standards in CASE	

